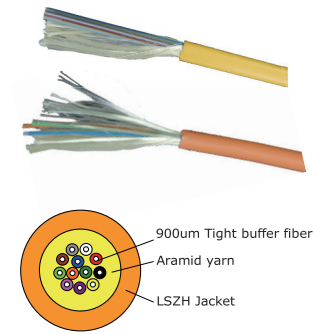
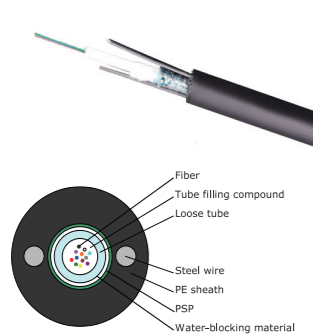


Indoor Multi Purpose



LSZH Jacket, Tight Buffer Type IEC332-3C
Single-mode (OS2) Yellow color
Multi-mode (OM2) Orange color
Multi-mode (OM3) Aqua color
Fiber Count: 4 ~ 24 core

Outdoor Unitube Light-armed



MDPE Jacket, Central Code Tube
Light-armor PSP
Single-mode (OS2)
Multi-mode (OM2)
Multi-mode (OM3)
Fiber Count: 2 ~ 24 core

Connectors



Insertion Loss (dB) : ≤ 0.20 (SM/MM)
Return Loss (dB) : ≥ 55 (SM), ≥ 40 (MM)
Pkg : 50 pcs/ Box

Pigtails



ST, SC and LC variants
Available in OM1, OM2 and OS1
1 meter length
Fully tested prior to shipment

Quick Install Kit



ezi-FIBER Quick Install Kit contains the tools for quick field termination the mechanical splices and quick assembly connectors.
Package consists of:
ezi-Connectors, ezi-Splices, Fiber Cleaver, ezi-Tools & wipes

Fiber Cleaver



Application fibers: Silica Optical Fiber
Cleaving angle: $\leq 0.5^\circ$ @ Single Fiber
Blade life: 48000 times
Blade positions: 16 Rotating Positions
Size: 101(L) * 59 (W) * 65 (H) mm
Weight: 300g

Quick Connectors



No tool or jig is required.
Accept 250um/ 900um/ 2.0mm/ 3.0mm fiber.

Mechanical Splice



No epoxy needed. With transparent body, the splice connect can be seen by Fiber Checker immediately. Insertion loss 0.1dB and accept both 250 and 900um fiber.

Duplex Patch Cord



OM2, 10G OM3 and low-water-peak Single-mode 9/125um fiber options cables.
SC / ST / LC connector variants
Length: 3,5,10 meters
All assemblies are machine polished providing highest quality.

Fiber Adapter Panel



SC / ST / LC adapter panels
Simplex or Duplex
Single-mode or Multi-mode

Wall Mount Enclosure



Accepts up to 24 ports
Comes with Splice-Tray
Dimension L*W*D : 280*280*80mm
Weight : 2.2kg
ST/ SC / LC adapter panels are ordered separately

Rack Mount Enclosure



19" metal enclosure,
24/48 ports 1U size,
48/96 ports 2U size,
Comes with front cover & Splice-Trays
ST/ SC / LC adapter panels are ordered separately

MPO Trunk Cable



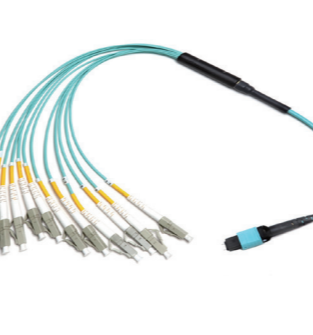
Fiber count 12~ 144
Cable : OM3 or OS2; LSZH
Cable terminated with low loss 12 fiber MPO female/ male connectors.

MPO Patch Cords



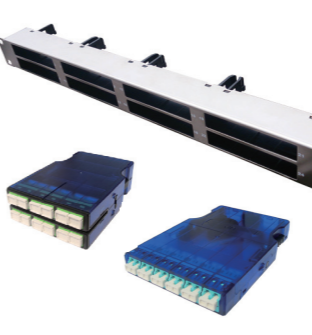
Cable : OM3 or OS2; LSZH
Low loss MPO 12 fiber MPO round cable patch cord.
Terminated with male and/or female MPO connectors.

MPO Fan-Out Cable



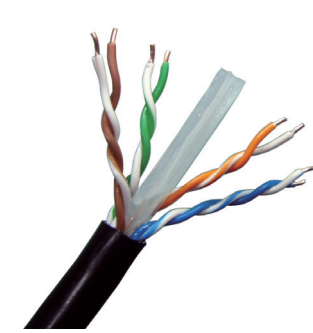
Cable : OM3 or OS2; LSZH
Connect 12 fiber MPO connector to LC or SC.
Terminated with male or female MPO connectors.

MPO to LC/SC Cassette



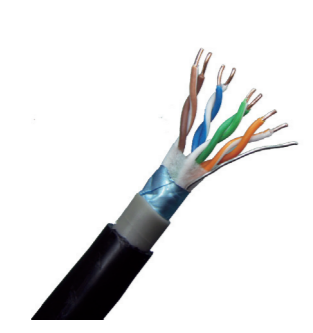
Plug-and-play preterminated and pretested cassette.
Fits in 19" fiber optic enclosures and panels.

Outdoor UTP Gel Filled



ISO / IEC11801,
ANSI/TIA/EIA cabling standard
Flooding compound prevents moisture from entering minor leaks in the sheath
Available in Cat.5e / Cat.6

Cat.5e Outdoor FTP



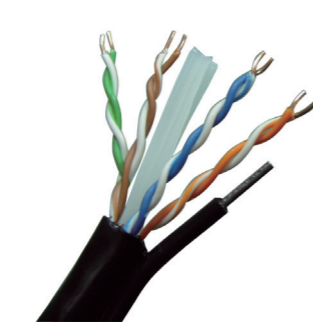
ISO / IEC11801,
ANSI/TIA/EIA cabling standard
24AWG solid bare copper
Double sheath assembly with PE outer jacket, PVC jacket underneath HDPE insulation with drain wire

Cat.6 Outdoor U/FTP



ISO / IEC11801,
ANSI/TIA/EIA cabling standard
23AWG solid bare copper with foam-skin PE insulation,
Outdoor PE jacket with individual pair shielding wrapped under a layer of aluminium-foil laminated tape.

Cat.6 Outdoor UTP



ISO / IEC11801,
ANSI/TIA/EIA cabling standard
23AWG solid bare copper with HDPE insulation,
Outdoor PE jacket with steel wire reinforcement

Industrial Mounting Boxes



IP67 Mounting boxes
UL safety verified
UL 1863 compliant,
UL94V-0 fire retardant plastic
Stainless steel cover
1 ~ 4 ports
with patch plugs & fillers

Industrial Keystone Jacks



IP67, UL safety verified,
UL 1863 compliant,
Accepts 22 ~ 26 AWG,
High impact flame retardant plastic housing, UL94V-0 rated
Accepts Unshielded /Shielded Cat.5e /Cat.6 jacks

Industrial Patch Cords



IP67, UL safety verified,
UL94V-0 rated,
Endures high UV, humidity,
oily and acidic environments
Available in Cat.5e /Cat.6 UTP / FTP
Length: 1, 2, 3, 5 meters

Industrial Patch Plugs



IP67, UL safety verified,
Endures high UV, humidity,
oily and acidic environments
Accepts Cat.5e /Cat.6 UTP / FTP RJ45 plugs

Fiber Optic & Copper Solutions

STRUCTURED CABLING SYSTEMS



DINTEK Electronic Ltd.
5F., No.8, Ln.97, Wugong Rd.,
Xinzhuan Dist., New Taipei
City 24886, Taiwan R.O.C
TEL: +886- 2- 2299 7898
FAX: +886- 2- 2299 7770
E-mail: sales@dintek.com.tw

DINTEK Electronic Ltd.
St. - Oswalds - Gasse 17
CH- 6300 Zug, Switzerland
TEL: +41- 91- 600 93 57
FAX: +41- 91- 600 93 56
E-mail: sales@dintek-switzerland.ch
http://www.dintek-switzerland.ch

PowerMAX+™ Cat.6A Cabling Systems

PowerMAX™ Cat.6 Cabling Systems

PowerPRO™ Cat.5e Cabling Systems

Cat.6A U/UTP Cable



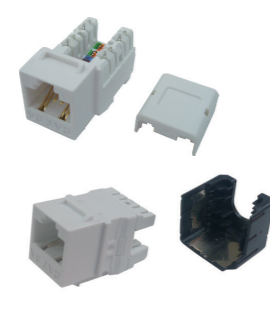
ETL Certified for Category 6A U/UTP Cable, 4 Pairs 23AWG, Solid (305M per Reel)

Cat.6A F/UTP Patch Cord



RJ45 Plug 50u" gold, 4 Pairs 26AWG, Stranded Color: Gray Length: 1, 2, 3, 5 meters

Cat.6A ezi-JACK



ETL Verified, Component Level ezi-JACK can use ezi-TOOL and 110 punch down tool

Cat.6A Patch Panel



19" 24 port Patch Panel, Snap-in type, 1U size rotatable cable manager

Cat.6 U/UTP Cable



UL,ETL Verified 4 Pairs 23AWG, Solid PVC Jacket (305M per box) Color: Gray,Blue,Yellow,Red

Cat.6 Patch Cord



4 Pairs 24AWG, Stranded RJ45 Plug 50u" gold, molded boots Length & Color: 1,2,3 meters (Blue,Gray,Red,Yellow,Green,Black) Length & Color: 5,10 meters (Blue,Gray)

Cat.6 ezi-JACK



ETL Verified, Component Level ezi-JACK can use ezi-TOOL and 110 punch down tool

Cat.6 Patch Panel



19" patch panel, 110/ Krone type, 24 ports 1U size or 48 ports 2U size Snap-in type, 24 ports works with ezi-JACK

Cat.5e U/UTP Cable



UL,ETL Verified 4 Pairs 24AWG, Solid PVC Jacket (305M per box)

Cat.5e Patch Cord



4 Pairs 24AWG, Stranded, RJ45 Plug 50u" gold, molded boots Length & Color: 1,2,3 meters (Blue,Gray,Red,Yellow,Green,Black) Length & Color: 5,10 meters (Blue,Gray)

Cat.5e ezi-JACK



ETL Verified, Component Level ezi-JACK can use ezi-TOOL and 110 punch down tool

Cat.5e Patch Panel



Cat.5e 19" 110/ Krone Patch Panel 24 ports, 1U size, Panel 48 ports, 2U size, Component level

Cat.6A S/FTP Cable



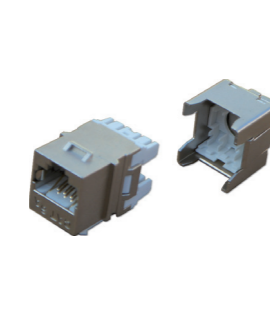
3P Certified for Category 6A Screened 4 Connector Channel Cat.6A, 4 Pairs 23AWG, Solid (305M per Box)

Cat.6A S/FTP Patch Cord



RJ45 Plug 50u" gold, 4 Pairs 26AWG, Stranded Color: Gray Length: 1, 2, 3, 5 meters

Cat.6A Shielded ezi-JACK



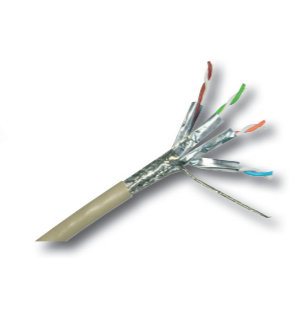
ETL Verified, Component Level Fully shielded ezi-JACK can use ezi-TOOL and 110 punch down tool

Cat.6A Shielded Panel



19" 24 port Patch Panel, 1U size, Snap-in type, with cable manager 1U 24P metal

Cat.6 Shielded Cable



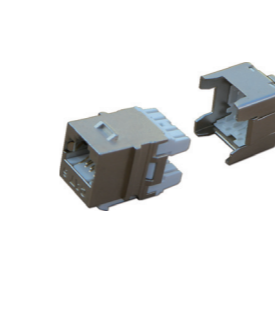
3P Certified for Category 6 Screened 4 Connector Channel 4 Pairs 23AWG, Solid PVC Jacket, U/FTP, S/FTP (305M per Box)

Cat.6 S/FTP Patch Cord



RJ45 Plug 50u" gold, molded boots 4 Pairs 26AWG, Stranded Color: Gray Length: 1, 2, 3, 5 meters

Cat.6 Shielded ezi-JACK



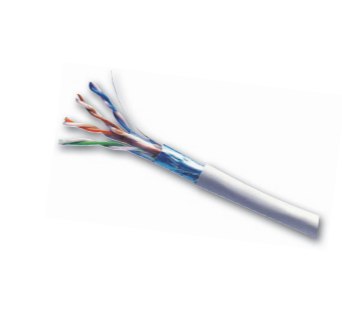
ETL Verified, Component Level Fully shielded ezi-JACK can use ezi-TOOL and 110 punch down tool

Cat.6 Shielded Panel



19" 110/ Krone type, 24 ports fully shielded patch panel, 1U size, Component level

Cat.5e F/UTP Cable



UL, ETL Verified 4 Pairs 24AWG, Solid PVC Indoor Shielded (305M per Box)

Cat.5e F/UTP Patch Cord



RJ45 Plug 50u" gold, molded boots 4 Pairs 24AWG, Stranded Color: Gray Length: 1, 2, 3, 5 meters

Cat.5e Shielded Jack



110/ Krone type fully shielded keystone Jack, T568A/ B Component level

Cat.5e Shielded Panel



19" 110/ Krone type, 24 ports fully shielded patch panel, 1U size, Component level

Wallplate, Flat Type



Material: ABS, white color (UK type, 86 x 86 mm) (US type, 70 x 114 mm) Single / Double Port Flat type, with shutter, Can fit with Cat.5e/ 6/ 6A ezi-JACK

Wallplate, Angle Type



Material: ABS, white color (UK type, 86 x 86 mm) Single / Double Port 45 degree type, with shutter, Can fit with Cat.5e/ 6/ 6A ezi-JACK

CurvaPlate UK type



Material: ABS, white color (UK type, 86 x 86 mm) Single / Double Port Flat type, & 45 degree type, w/o shutter, Can fit with Cat.5e/ 6/ 6A ezi-JACK

CurvaPlate US type



Material: ABS, white color (US type, 70 x 120 mm) Single / Double Port Flat type, & 45 degree type, w/o shutter, Can fit with Cat.5e/ 6/ 6A ezi-JACK

RJ45 Plugs



Cat.5e & Cat.6 RJ45 Plug 50u" gold for UTP/ FTP & Solid/ Stranded Cable Unshielded & Shielded types

RJ45 Boots



Materials: ABS+PVC, ABS has a harder material, therefore no fall off after crimping. PVC is maintaining proper bend radius on stranded cable. Cat.5e Color: Blue,Gray,Red,Yellow,Green,Cat.6 (7mm) Color: Blue,Gray

RJ45 Crimping Tool



Crimping for RJ12(6P) and RJ45 (8P) plug, suitable for solid and stranded wire.

IDC Tools



UTP Cable Stripper 110 Punch Down Tool

ezi-TOOL



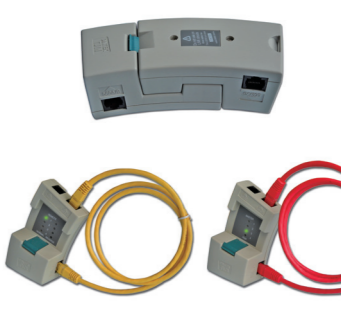
E-Tool (Red Cutter) For horizontal type ezi-JACK Cat.5e & Cat.6 ezi-Jacks F-Tool (Yellow Cutter) For vertical type ezi-JACK Cat.5e & Cat.6 ezi-Jacks

LAN Tool Kit



- 8P/6P Crimp Tool
- Punch Down Tool
- Cable Stripper
- Cable Cutter
- Twin Tester
- 6P4C Plug x 30
- 8P8C Plug x 30
- Boots x20

Twin Tester



The master and remote units can work together for end-to-end testing or separately as 2 patch cord testers. It detects including shorts, opens, reversals, and mis-wires.

Cable Management



Organize cables on the front and/or back of the rack an extremely neat. Large capacity duct to allow quick shifting, adding and changing cables.